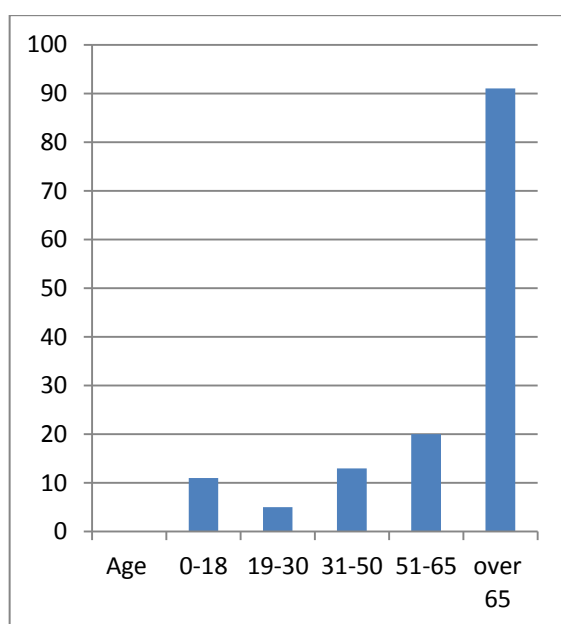


Cherry Burton Feedback for Parish Transport Champions

Parish	Cherry Burton
Parish Transport Champion	Wendy Voakes
Surveys Returned	78
Individual responses	140
Analysis Completed	30 March 2016

Summary of Survey Results

I. Age Profile of Respondents



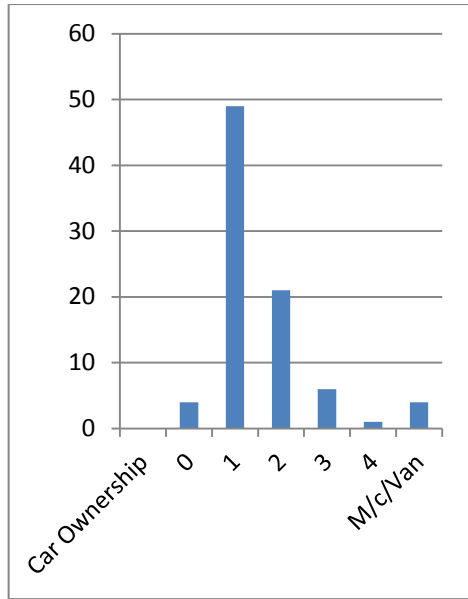
Using data from the East Riding Data Observatory (*census 2011*) Cherry Burton Parish is made up of 566 households (1392 residents).

There are 120 households (22%) with one person in the household that has a long term health problem or disability which may impact on their transport needs,

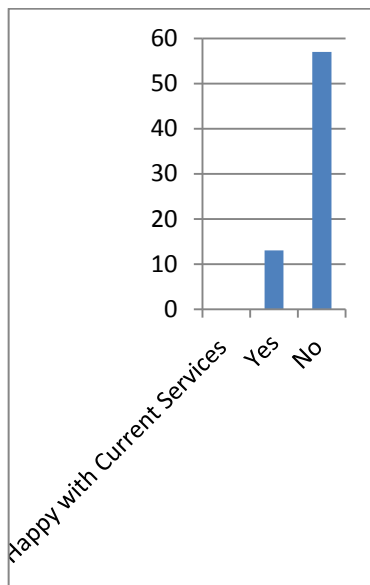
2. Car Ownership

Of those that responded, most had access to one or more cars, vans or motorcycles.

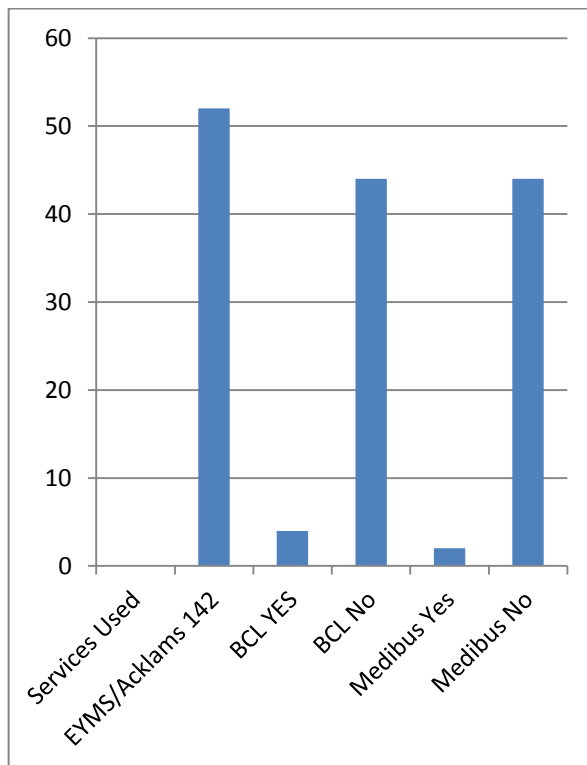
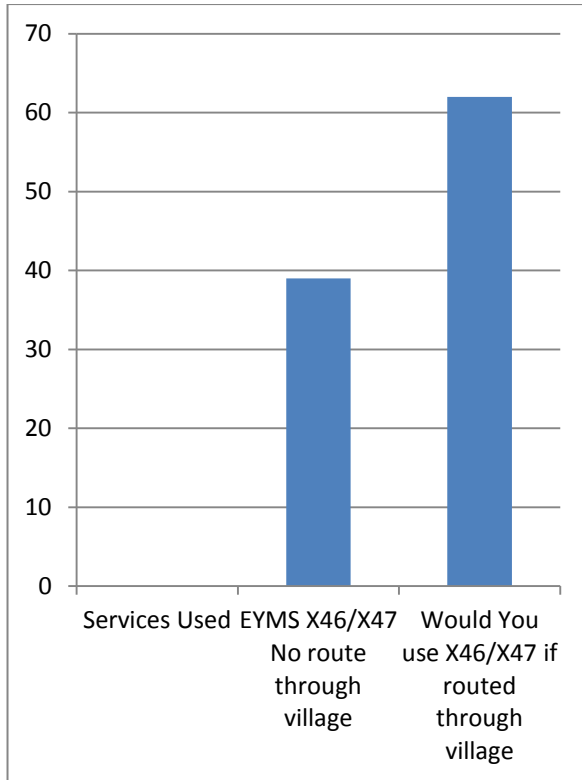
The ONS 2016 (Office of National statistics) information confirms that 95% of households have access to one or more modes of transport. However there are 26 households who have no access to their own transport.



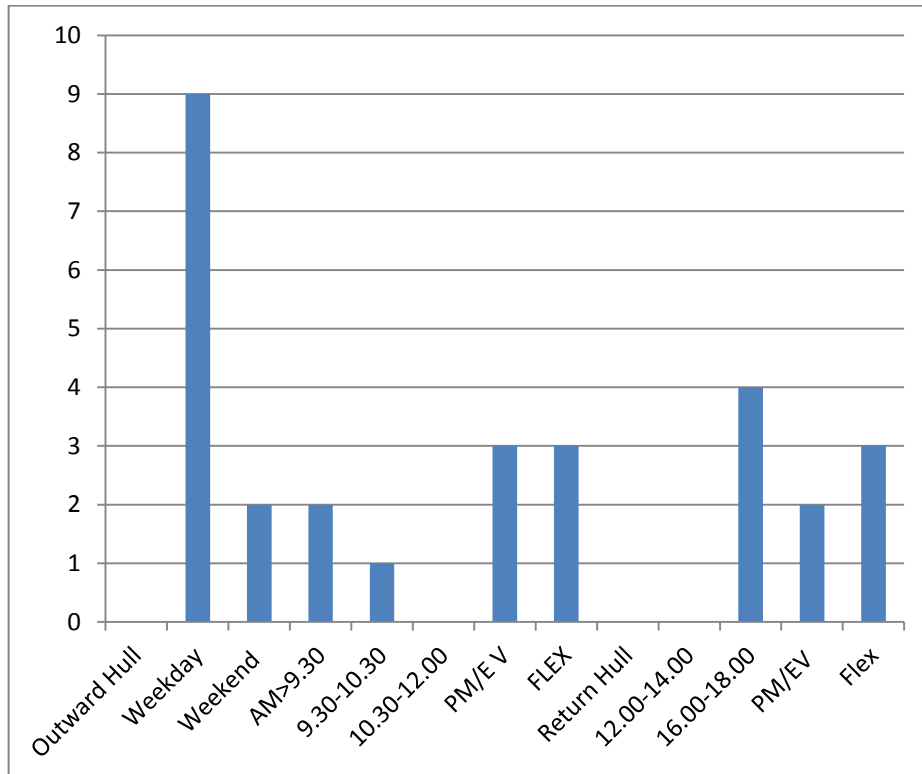
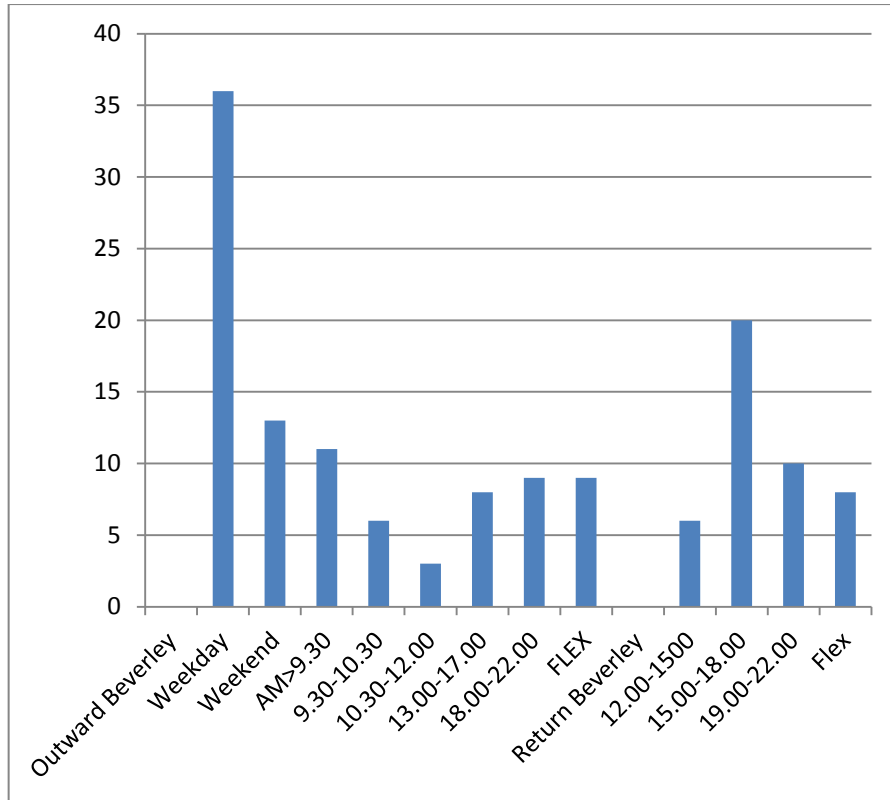
3. Are you happy with current bus times and service patterns?

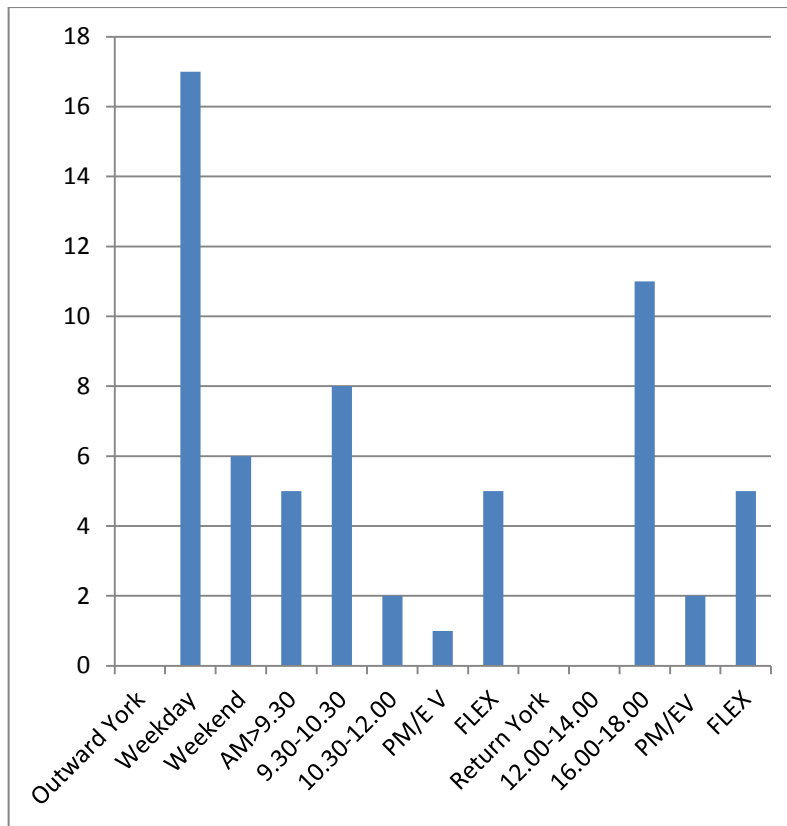


4. Which Services do you use?



5. Details of unmet travel needs





6. Comments

Would use X46/47 if routed through village
Too Limited, no evening bus. Please don't take bus pass off OAP's
Too infrequent & bus stops too far from house
Would like to make more use of the service but buses are too infrequent
Service too infrequent - would like an hourly service up to 10.30pm
No late bus home from Beverley, only one driver in the household
Not enough CB-Bev buses connecting to Hull/York
Day time shopping
2 more services (142) would be good at the weekends
Very limited especially in school hols, had to use public transport for 1 month my working day was limited from 9am-3.15 I usually work full time
Not enough buses for return journey
Don't run often enough
To use X46/X47 have to drive to Bishop Burton where parking is difficult
Not consistent throughout the day & not enough buses. Would travel to Hull & York if there was a through bus from CB & would use train if times coincided with buses
No 142 service after 3.35pm - then only on school days from Bev to CB later service would allow for more flexibility, need a lunch time service to Bev. Bus times too far apart on return from Bev

Need a later bus back to CB from Bev. Timetable no longer delivered so difficult to find out what services are available. If the rumoured parking restrictions come in to effect in Bishop Burton then CB residents would be unable to access the X46 bus to York
The latest bus from CB is at 1.10pm & no bus back after 3pm
Hardly any buses, in future or if car off the road we would be stuck
3 Buses a day from CB mean you are stranded in Bev for hours between bus times. We would use the X46/X47 once possibly twice a week if it ran through the village
Likes the service & by an large it is well run, would miss if it were withdrawn
No service allowing time in Bev in afternoon, or connecting with rail services at Bev station. No late afternoon (eg 5.30pm) service from Bev to cater for workers in Hull or Bev. The use of X46/X47 dependant on parking in Bishop Burton
No evening service to or from Bev, non-drivers cannot use theatres restaurants etc or late workers returning home
Insufficient buses through the village particularly to Bev with a suitable return time. A York bus service would be very good.
Too infrequent (service to Bev) & expensive
As a retired couple we don't have to be places at a given time so plan visits to Beverley around existing bus time-tables
Too infrequent
Would like later 142 from Beverley eg 17:30
Need a more regular service to & from Bev at more consistent times. After suffering a stroke would appreciate a more amenable mode of transport to get to Bev & back for frequent blood tests, appointments etc
No buses into village after 5pm, Sat/Sun buses very limited. Buses to infrequent
Timetable is poor
Far too infrequent & times not always user friendly - would be marooned without a car
Two teenagers who go to Bev & Hull buses/times too infrequent and inconvenient
Reasonably happy - weekdays the latest return bus is 3.35pm for link up to X46 a later bus around 5.15pm would be useful. For daily trips to York/Hull Brid etc a later return bus 5.30pm/6.15pm would be useful
Lack of times & stops not a sufficient number of buses. Co-operation between EYMS & Acklams
Bus times to Bev allows insufficient time in Bev before having to catch last bus back to CB. A bus used to serve Butterfly Meadows, Cherry Burton & Walkington this linked with the bus that arrived in Bev from Hull. When I travel back from Hull I often use the X46 to Bishop Burton then walk the 1.3 miles to CB along a road that has no footpath making it dangerous to walk
No bus when schools are on holiday
Not tested but infrequency seems to be a problem
When Longcroft School is closed there is no early bus - which can cause problems getting to work or college in Bev
Not enough buses to Bev for appointments etc, also less buses when schools are on holiday as they only run during term time
Too few buses to Bev, would use buses if there was a better service
Daughter goes to Bev High, can get to school however she is unable to get home as the Longcroft bus leaves at 3.35pm & she doesn't finish until 3.40, this also effects other girls in the village
X46 & X47 do not go through CB, have to catch it in Bishop Burton
Both my wife & I are wheelchair bound. A late bus for cinema goers was sorely missed when we were young. Ambulance service finishes at 8pm
Don't know if there are buses that go through Cherry Burton, but would use one if there

was one into Bev
Little choice of times of being able to travel. No provision for those wishing to travel after 1pm. If bus times were more varied I would consider giving up my car
The last bus from Bev is 3pm (school term 3.35pm). Need a bus timetable displayed in the village or given to each house
The non-existent service is unacceptable, when we have people staying myself & my son have to run them into Bev because of the frequency of the bus & getting back is even worse. Could use smaller buses for economic reasons - Plymouth & Manchester use 'Little Gems'
Want to be able to return later than 3.11pm, we would use the buses to access leisure facilities, hospitals & shopping etc more than we are presently able to. If a service continued from CB to Bishop Burton it would allow to catch the York buses & pick up more passengers
At aged 87 I always drive. I live on my own & intend to stay in CB as long as possible. Should I not be able to drive I would use the bus & taxis
Would use the X46 regularly if it came through CB
A later evening bus from Beverley would be useful, drive to Bishop Burton at present & park, may use X46/X47 more if it came through the village
Service 142 to Bev - return service is either too close to arrival time or too long to wait for return so either too long or not long enough in Bev, also 142 does not connect with services to Hull as does not pass the railway station
It would be useful to have a bus back to CB at about 1.30pm as an addition - as have had difficulty getting back to CB when attending a late morning Drs Surgery that runs late
Infrequency of services & inconvenient link up for return journey
Not frequent
Buses getting into Bev are fine, but it is very difficult getting back in the afternoon
Bus times are too spaced out & difficult to make appointments so have to use my car, if times were more frequent I would probably use more often
Would like a readable time table & also needs an Acklam timetable
Don't know as doesn't use the bus service
Problem getting back from Beverley in afternoons last bus 3pm - as bus at 4pm or 4.15pm would be useful
Would like a bus that leaves Bev between 5pm - 6pm
Buses too few & far Between. Would use Medibus if necessary
Daughter at Bev High school unable to get bus home as leaves station too early (same at Longcroft school), I also work 2 days in Bev but no bus after 4pm so have to use car
Happy with current bus times on the whole, but occasionally would be a benefit if last bus back to CB from Bev was later than 3pm
Would like a bus that leaves Bev between 5pm - 6pm, use the bus almost daily including Sundays all year round
No Buses should drive along the BB road, a dangerous narrow route due to Dingle Dell. Major accident in 2009.
The times are very sporadic not easy to make onward travel arrangements particularly to meet Hull buses. Difficultly with parking in Beverley and lack of provision for Park and Ride workers take up majority of long stay car parking spaces.
Not at times to suit our needs.